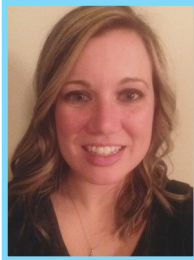


## Our Providers



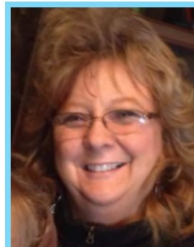
Patty Kovacs MS RD CD, is a Dietician with over 15 years of experience working in pediatrics. She is an advocate for the blended diet and educating families and therapists on bringing whole foods into the world of tube

fed children. She has been with Indiana First Steps for over 14 years and has built NCA Therapy from the ground up.



Morgan Fulk MS, OTR is an Occupational Therapist who joined the NCA Family over a year ago. She is very active in the First Steps program and sees on average, over 15+ children a week! She encourages food play, being

messy, and creating a lighthearted sensory experience. She recently moved to the area with her husband and two fur-babies.

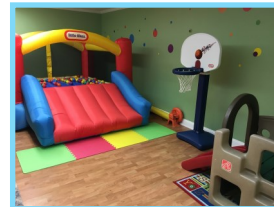
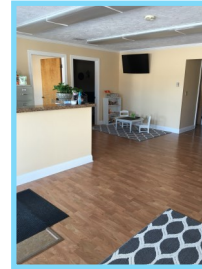
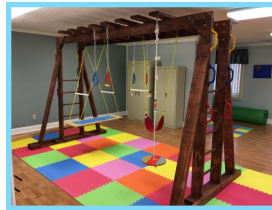


Sara Parker MA, CCC-SLP, has devoted the past 20+ years to working with infants and children with complex medical diagnosis and feeding concerns. She worked as the Feeding Team Coordinator at

Riley Hospital for 16 years. She is known for developing safe and age-appropriate feeding plans to maximize oral feeding ability skills in children.

## NCA Therapy

First Steps Agency  
Pediatric Outpatient Clinic  
Training Center  
Office Rentals



### First Steps

*office@ncatherapy.com*

**Training Center & Leasing Office**

*training@ncatherapy.com*

**Pediatric Outpatient Clinic**

*pedsclinic@ncatherapy.com*

9000 South CR 800 West

Daleville, IN 47334

1-765-644-0500

*www.ncatherapy.com*

# Intensive Pediatric Feeding Program



## NCA

Pediatric  
Outpatient Clinic



## What is this program all about?

NCA's *Intensive Pediatric Feeding Program (IPFP)* was developed to help families who have children ranging in ages from 6 months to 8 years, struggling with feeding problems.

### How to get started?

The first step is scheduling a three hour evaluation, which consists of meeting with each therapist, and having an IPFP plan created specific to your child's needs.

### What's next?

Every IPFP plan will be specific to the needs of the family, sessions will be scheduled on an "as needed" basis. All IPFP sessions will consist of a 3-4 hour hands-on therapy appointment, 30 days of follow-up with the three therapists via email, and a follow-up phone call with one of the therapists mid session. Each appointment will take place on a designated Saturday at the NCA Outpatient Clinic. At each appointment, your child/family will spend one hour with each therapist (Registered Dietician, Occupational Therapist, and Speech Language Pathologist). There will be time to collaborate with the team as a whole at the end of each appointment. During the following 30 days, families will be responsible for completing "homework tasks" and working on new skills taught/suggested by the therapists. Family involvement will be a huge aspect of your child's progression and success with this program.

## Which families will benefit from IPFP?

All families dealing with meal time as a struggle will be supported and gain knowledge in the IPFP program. We focus on the family's desire for a pleasant meal time, rather than a child's specific diagnosis. This includes children with oral aversions, those not taking in enough variety or calories to meet growth needs, as well as those families interested in pursuing weaning from a feeding tube. Diagnosis we have worked with include, but are not limited to, oral aversion, frequent emesis, FPIES, EoE, reflux, delayed gastric emptying, FTT, multiple food allergies, autism with sensory struggles, and tube feeding wean to oral intakes.

### How much does IPFP cost?

The initial evaluation will cost \$250. After the evaluation, if an IPFP plan is set in place, each session with the team will cost \$300. Sessions must be paid for in advance and appointments will be scheduled only once payment is made. Payment can be made via Paypal, credit card, cash or check.

### Will insurance cover IPFP?

You may contact your insurance company to see if they will cover any or all of the expense of this program. NCA will charge fee-for-service.



## Why IPFP?

Patty Kovacs and Sara Parker, both well known in their respective fields, have treated children with feeding difficulties for the past 15+ years. It was only a year ago, while presenting at a feeding conference, where Patty and Sara had the opportunity to meet face to face. Since that time, they have teamed up to treat kids across the Indianapolis area within the First Steps Program. This partnership was only the beginning, within a few months their ultimate goal became finding the perfect OT to join their team, and to start an intensive outpatient feeding program.

With the opening of the Pediatric Outpatient Clinic at NCA Therapy and having Morgan Fulk, OTR, join the team, they knew this was the perfect time to jump right in!

This phenomenal trio of therapists are excited to introduce (*the first of its kind*), NCA's Intensive Pediatric Feeding Program to Indiana and the surrounding areas!

